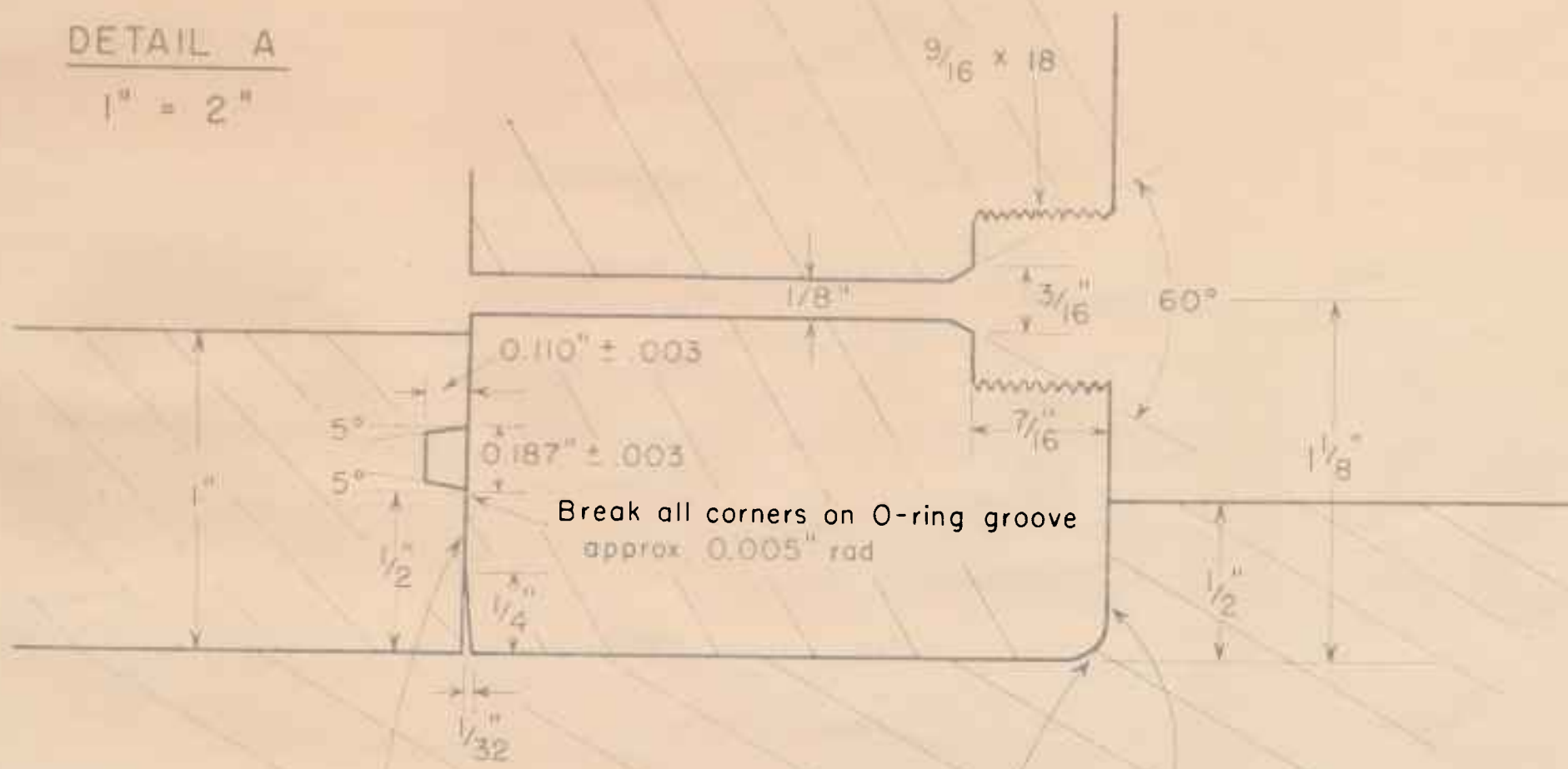


DETAIL A

1" = 2"



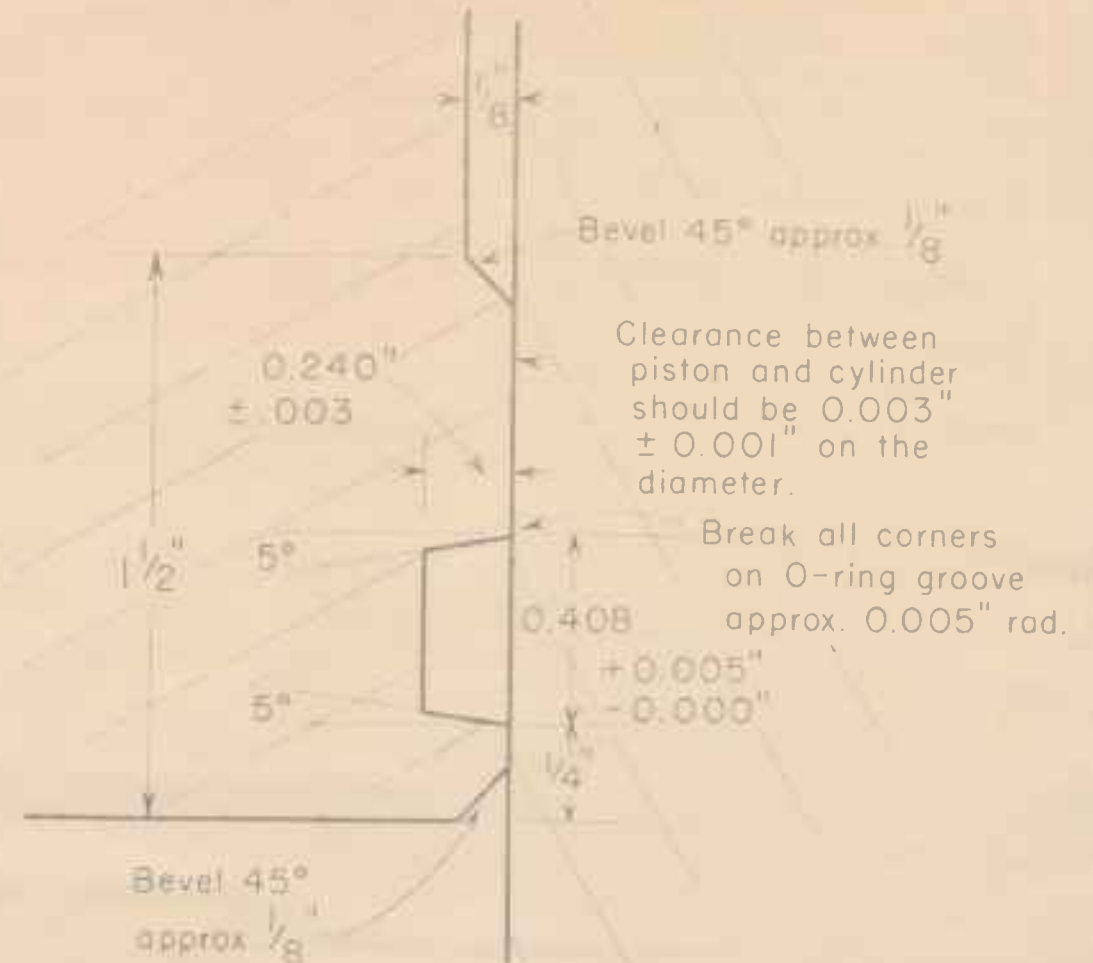
Clearance between cylinder and end plate should be 0.002" ± 0.001" on the diameter.

1/8" radius on both cylinder and top plate.

Clearance between cylinder and top plate of press should be 0.003" ± 0.002" on the diameter.

DETAIL B

1" = 2"

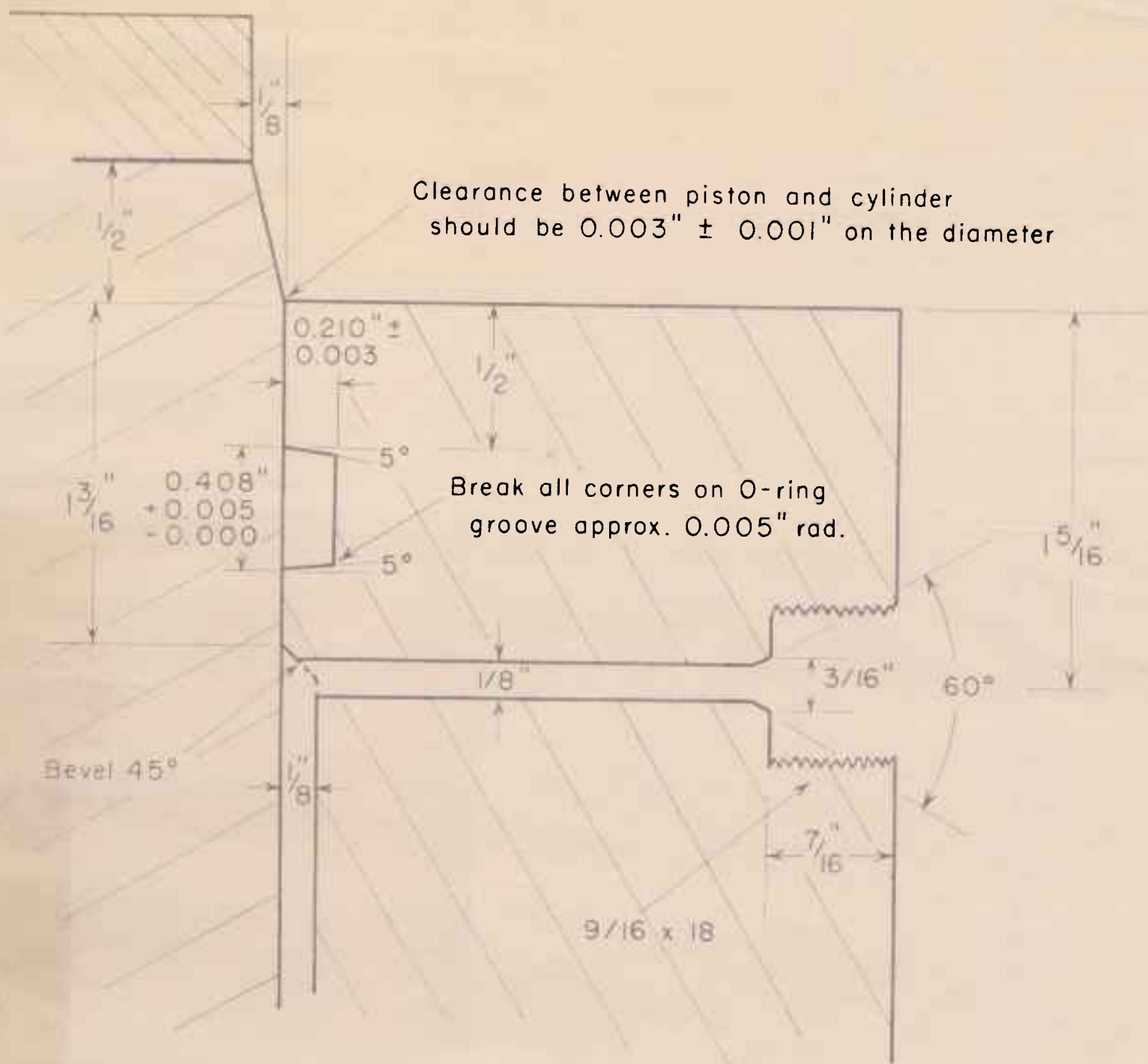


Bevel 45° approx. 1/8"

Clearance between piston and cylinder should be 0.003" ± 0.001" on the diameter.

Break all corners on O-ring groove approx. 0.005" rad.

Bevel 45° approx. 1/8"

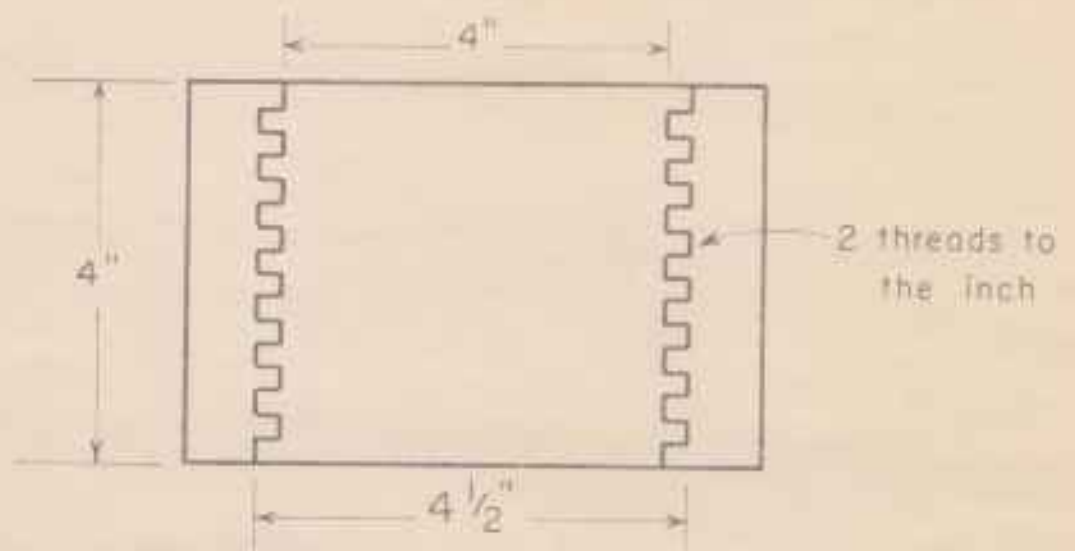


Clearance between piston and cylinder should be 0.003" ± 0.001" on the diameter

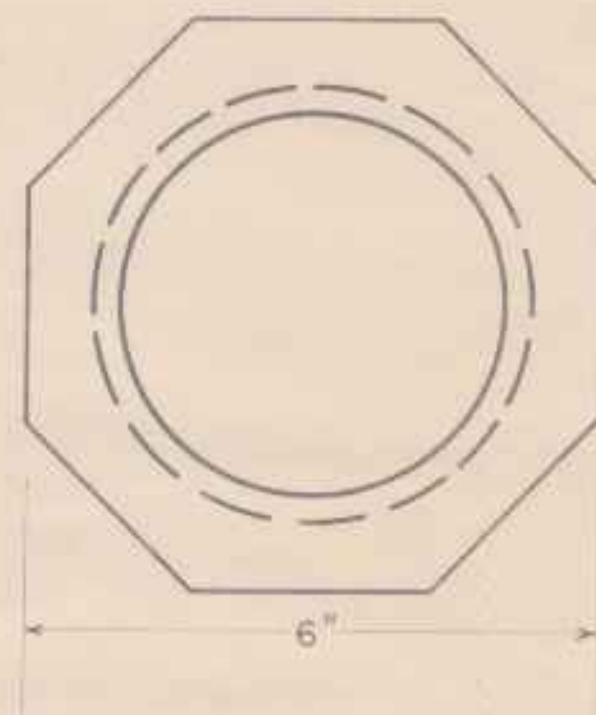
Break all corners on O-ring groove approx. 0.005" rad.

DETAIL C

1" = 2"



2 threads to the inch



DETAIL D

1" = 1/2"